



Simmonds Select

Merbau

 *The best choice*



**Simmonds Lumber**

Pty Limited





*...The preferred material*

**Decking, including patio's terraces, can be made from material such as concrete, brick or stone but Merbau Decking offers several advantages over all other materials.**

By using Merbau the need for elaborate and time consuming foundation work can be dispensed. The warmth and natural beauty of Merbau Decking is a marvellous way to enhance the aesthetic appeal of any home.

By purchasing Simmonds Lumber Merbau Kiln Dried Decking you can be assured that you are helping to stop illegal logging, your timber is fully DNA Verified and comes with a third party audited Chain of Custody.



# Introducing a revolution in fixing for 90 x 19 Merbau decking



This product takes away the need for conventional drilling for nail or screw fixing, making it easier to maintain the beauty of your deck in years to come.



KlevaKlip "Merbau Clip" is a multi-board concealed fixed clip. Working on "fixed pitch" principle, the clip provides a consistent finish that is obtained without the use of nails or screws. As each board is inserted into the KlevaKlip, its "teeth" locked into place by a special fixing tool that is supplied with each box of clips.

This mechanical holding is supported by the use of adhesive to provide a seamless fix, longevity and feel that is difficult to obtain with conventional fastening systems - with the added advantage of not having to pre-groove your boards.

The MT90 Merbau clip is designed to suit Timber Joists including Treated Pine or Kiln Dried Hardwood joists, H3 Treated Laminated Veneer Lumber (LVL) joists, Metal RHS joists, C Purlins, and is Top fixed into the joists. Available in G-300 Z600 galvanised steel or optional stainless steel.

The Top Fix clip is not suitable for F14 Unseasoned Hardwood.

For a technical brochure and a free dvd on the installation and advantages of this product  
Email : [mail@simmondslumber.com.au](mailto:mail@simmondslumber.com.au) or visit <http://www.klevaklip.com.au>

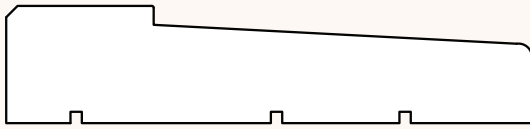
## F/J Laminated Merbau



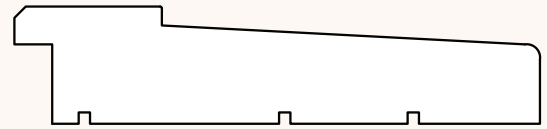
In gardens or decking areas with slopes of uneven levels, Merbau provides an interesting solution in the form of ramps or steps built with ancillary features such as handrails, balustrade and F/J Laminated Dressed Finished Posts. Other features such as pergolas and screens can be added to further enhance the outdoor living style. Besides the practical and aesthetic advantages, Merbau is also an environmentally friendly choice, it requires little energy in production and it can be easily recycled.

Merbau is an excellent choice for external and exposed applications because of its natural high density. Native hardwoods have considerable natural fire resistance, Merbau (Kwila) is one of the only timbers that is sufficiently fire resistant to meet Australian Standard AS 3959 and can be used in bushfire prone areas without any treatment.

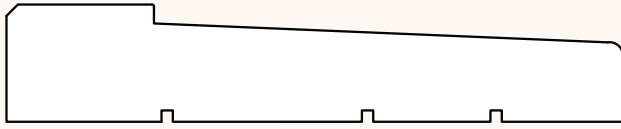
# Merbau Sills



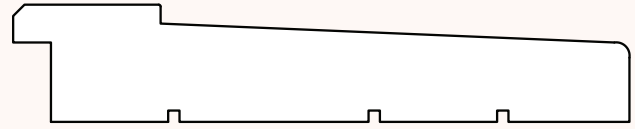
150x38 Merbau French Lite Sill (Non Rebated)



150x38 Merbau French Lite Sill



175x38 Merbau French Lite Sill (Non Rebated)



175x38 Merbau French Lite Sill (Rebated)

*Above profiles QLD only*

*All Tabma Profiles available - Special Profiles can be made to order, check with your local branch to confirm*

- Tougher than Teak, this beautiful species will provide a long lasting, hard wearing entry to your home.
- These sills are designed to match perfectly with popular Merbau entry door made by Australia's leading door manufacturers.
- Whether leading onto a paved area or onto your Merbau deck, Merbau Sills provide a natural connection to the world outside your home.

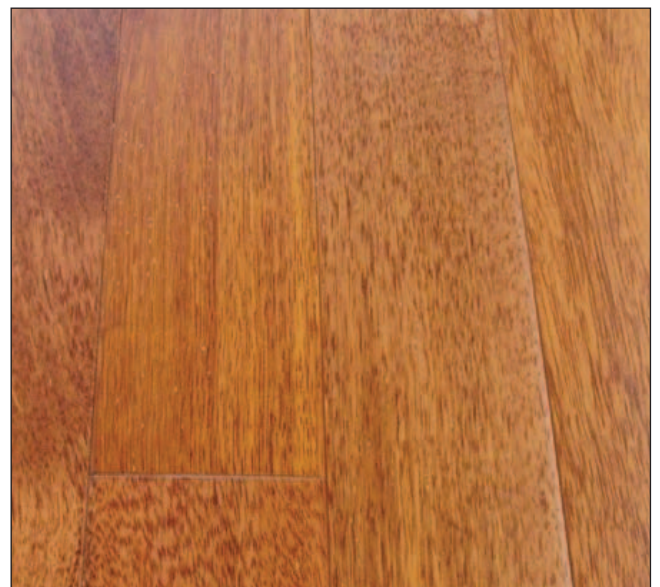
# Merbau Flooring



Merbau Flooring is one of the most hard and durable flooring options. When freshly cut, the heartwood of Merbau is a yellowish to orange-brown colour, but then darkens to brown or red brown.

One of the distinctive properties of this timber is that the surface of the boards may have yellow 'flecking' in the pores; thus when finished, the timber may appear almost flecked with gold.

Flooring is just one of the many uses for this durable timber, why not modernise your home with this beautiful species.



# STOP ILLEGAL LOGGING



- A practical business approach to combat illegal logging.
- Legality assurance world wide.
- Tracks timber lots from concessions to the customer and scientifically verifies legal origin of timber.
- Independent 3rd party DNA based verification by Certisource.
- DNA removes the human error and replaces it with bullet-proof science.  
*Kevin James Hill, Certisource CEO and founder.*
- Simmonds Lumber and Certisource working in partnership with Indonesian suppliers and Certisource's chain-of-custody verification systems. The Simmonds Lumber DNA timber testing initiative has set a new benchmark in combating the global illegal logging trade.
- Certisource's DNA verification is a world-first and offers a practical means of ensuring that timber can be traced back to a legal source.  
*WWF Forest and Trade Network.*
- Simmonds Group will continue to invest in this leading edge technology to ensure that the timber they import has a secure Chain of Custody from a legal Source.  
*Paul Elsmore, CEO Simmonds Lumber Group.*





## CONTAINER DOCKETS

Each container of timber products exported, that is derived from a batch of logs under Certisource verification will be accompanied by a Certisource Container Docket demonstrating that:

- Identification and removal of any supply chain elements that are clearly illegal.
- It has been independently verified that the forest concession has a legal right to harvest logs.
- All elements of the supply chain have followed, or are following, COC procedures agreed with Certisource.



## CERTISOURCE LABELLING

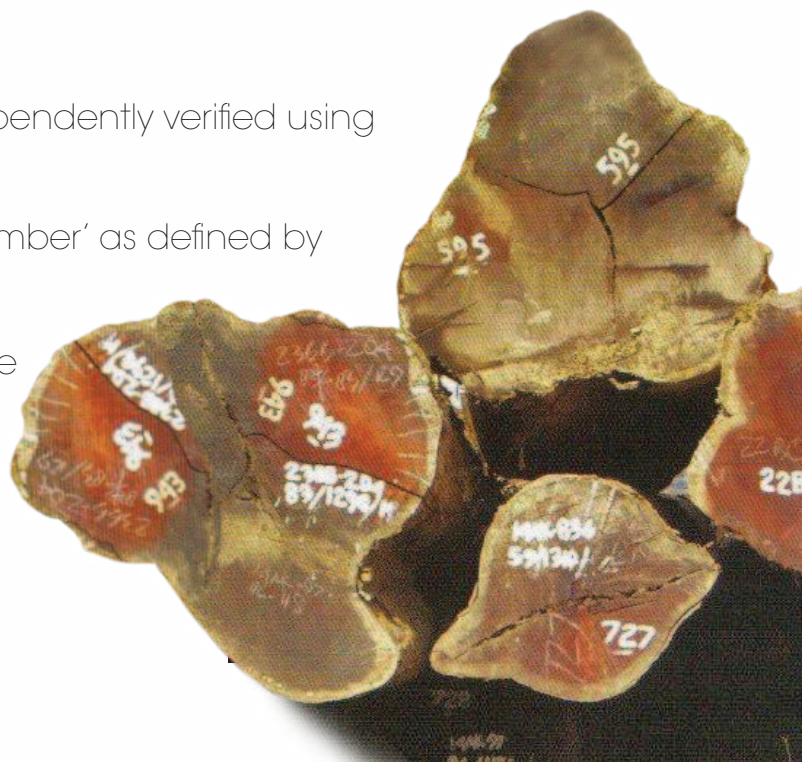
We believe that our methods and tracking technologies we employ ensure that the Certisource certificate carries a level of assurance unchallenged worldwide.

Certisource will only endorse timber products following the completion of our rigorous audit and inspection procedures.



## CERTIFICATE

- The source of timber has been independently verified using DNA matching technologies.
- Timber products are 'Verified Legal Timber' as defined by WWF's GFTN.
- All elements of the supply chain have followed COC procedures agreed with Certisource.
- All elements of legality verification have been completed.



## Decking Construction Tips

- To achieve lasting performance of timber decking with minimal maintenance it is important to pay close attention to the design, specifications and proper construction or installation. While it is important to select naturally durable timber or timber that has been pressure treated with preservatives for long term durability, it is equally important to apply good detailing and construction practices.
- To avoid the risk of fungal attack which occurs when timber remains at high moisture content of above 20% for a long period of time, it is important to avoid water traps and ensure that surface water drains away quickly. Sufficient natural ventilation around all component parts is generally the most effective way of avoiding high moisture content in timber.
- Exposure to ultra violet rays in sunlight does cause bleaching of wood colour but this can be prevented by coating with pigmented finishes. To avoid staining of timber by corrosion of metal fixings such as screws, nails, bolts, clips, plates and brackets and to ensure that the fixings themselves do not deteriorate, it is recommended that stainless steel be used where these fixings are concealed. More closely spaced joists will reduce the spacing between fixings and this will help restrain any movement in the decking boards.

## Storage & Handling

Timber is a natural product, and it will react to changes in the environment during the life of the product. Every effort is made during manufacturing to minimise the effect these changes may have on the final appearance of the product, however raised grain, swelling and resin bleed are natural characteristics and may occur as a result of changes to climatic conditions. To minimise the opportunity for these changes to impact on the finished product we recommend the following steps be undertaken when storing, handling and installing these products.

- Timber should be kept dry – store at least 150mm off the ground and evenly supported in a well ventilated under cover area. Protect the product from all sources of moisture, (including ground moisture), humidity, and weather until installed.
- Once installed ensure that the timber is coated with a quality oil based finish, being sure to follow the manufacturer's instructions.
- Ensure that you keep to a regular maintenance program to care for your timber.



*The best choice*

**Simmonds Select - Merbau**  
**Distributed by:**



**Sydney**  
1 Durham Street  
Rosehill NSW 2142  
Ph + 61 2 9638 7333  
Fax + 61 2 9684 6466

**Brisbane**  
146-164 Buchanan Road  
Banyo QLD 4014  
Ph + 61 7 3267 0244  
Fax + 61 7 3267 0239

**Melbourne**  
22-32 Nathan Road  
Dandenong VIC 3175  
Ph + 61 3 9791 2241  
Fax + 61 3 9791 2243

**New Zealand**  
15B Gabador Place  
Wellington  
Auckland NZ 1060  
Ph + 64 9 573 0280  
Fax + 64 9 573 0282