



STOCKPOST

the mark of a good post

END ASSEMBLY

- Time saving & easy installation
- Fully hot-dip galvanised
- Heavy duty registered design



STOCKPOST

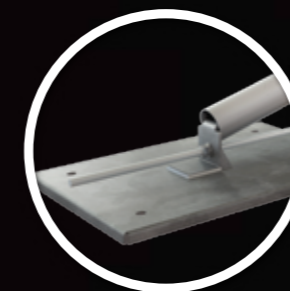
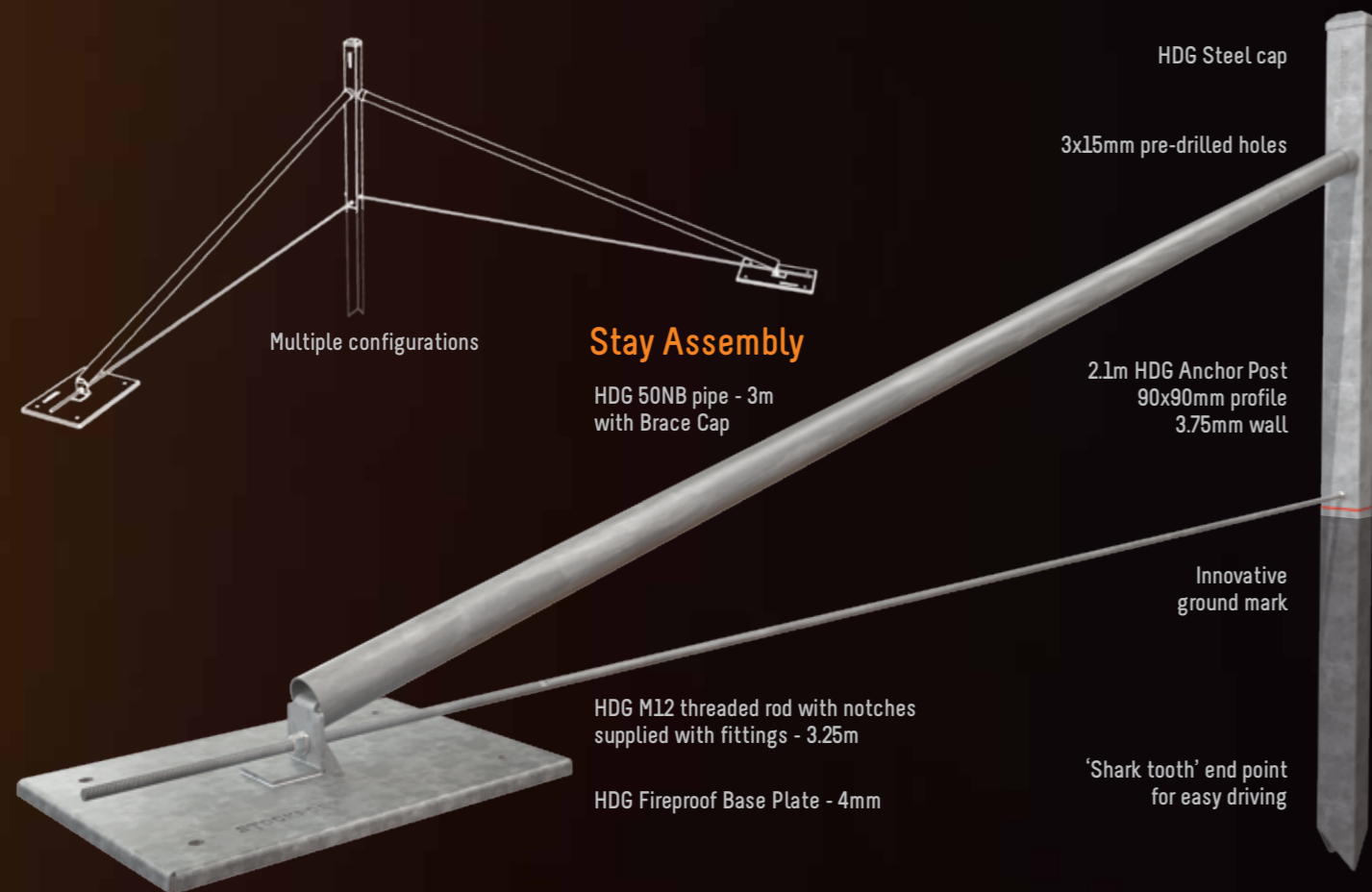
the mark of a good post

END ASSEMBLY

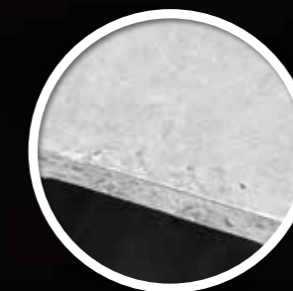
Our new, specially designed **End Assembly** is an integral part of any farm fence, now made with the same **Stockpost** quality – high performance without the high price tag

ground-breaking technology

- Time saving & easy installation
- Fully hot-dip galvanised
- Heavy duty registered design



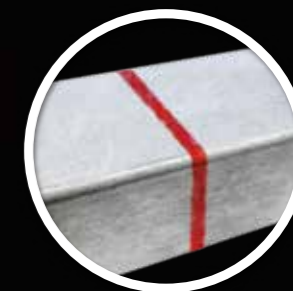
fireproof base plate



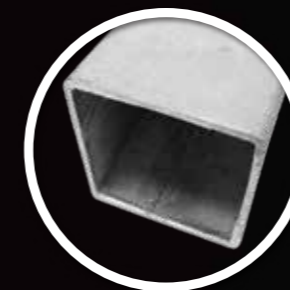
fully hot-dip galvanised



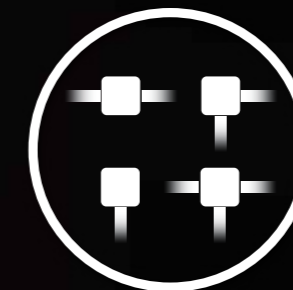
'shark tooth' registered design



innovative ground mark



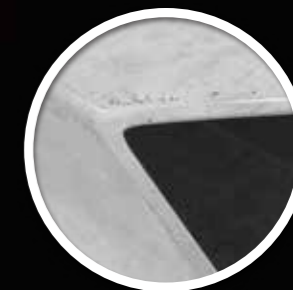
heavy duty square post



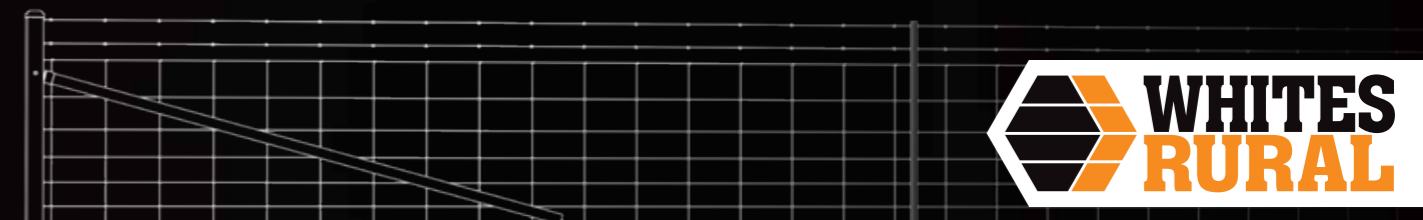
pre-drilled holes and multiple configurations



heavy duty brace cap



clever edges to avoid compaction



The STOCKPOST Family

the mark of a good post

STOCKPOST

the mark of a good post



Made for Australian conditions in our state-of-the-art factory. Designed for the practical enclosure of livestock.

STOCKPOST®

HOT-DIP GALVANISED*

- 10814 Galvanised 135cm (4'6")
- 10817 Galvanised 150cm (5')
- 10815 Galvanised 165cm (5'6")
- 10816 Galvanised 180cm (6')
- 10819 Galvanised 210cm (7')
- 10818 Galvanised 240cm (8')

BLACK BITUMINOUS

- 10804 Black 135cm (4'6")
- 10807 Black 150cm (5')
- 10805 Black 165cm (5'6")
- 10806 Black 180cm (6')
- 10809 Black 210cm (7')
- 10808 Black 240cm (8')

*Galvanised to Australian Standards

UTE PACK

the mark of a good post



STOCKPOST quality in a contractor pack. 200 posts in a secure steel cradle, no tie wires!

UTE PACK

HOT-DIP GALVANISED*

- 10811 Galvanised 165cm (5'6")
- 10812 Galvanised 180cm (6')

BLACK BITUMINOUS

- 10801 Black 165cm (5'6")
- 10802 Black 180cm (6')

*Galvanised to Australian Standards

STOCKPOST XL

the mark of a good post



STOCKPOST's bigger brother. 50 intermediate XL posts in our patented ute friendly pack.

STOCKPOST® XL

HOT-DIP GALVANISED*

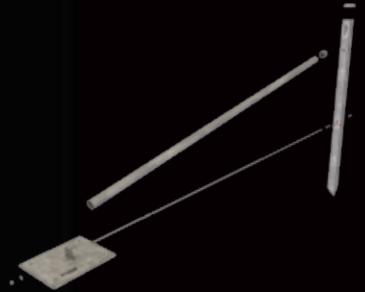
- 10856 Galvanised 180cm (6')
- 10859 Galvanised 210cm (7')
- 10858 Galvanised 240cm (8')

BLACK BITUMINOUS

- 10846 Black 180cm (6')
- 10849 Black 210cm (7')
- 10848 Black 240cm (8')

*Galvanised to Australian Standards

END ASSEMBLY



STOCKPOST End Assembly is made with the same Stockpost quality – high performance without the high price tag.

END ASSEMBLY

COMPLETE SYSTEM

- 10870 Anchor Post
 - 2.1m Anchor Post
 - Steel Cap
- 10875 Stay Assembly
 - Fireproof Brace Plate
 - 3m 50NB Pipe with Brace Cap
 - Threaded Rod with Fittings

ACCESSORIES

- 12206 Anchor Post Driver
- 13855 Fitting - Gudgeon & Top Strap
- 13856 Fitting - Drop Latch & Eyelet
- 10876 Brace Cap with Spike

*Galvanised to Australian Standards



A family owned Australian business

Whites Rural
Ph: 1300 559 732
ABN 25 001 845 478

For more information contact your Whites Territory Sales Manager or visit us at
whitesrural.com.au

