



**Preservative treated pine posts that combine strength and durability with lightness and ease of installation.**



In the agricultural industry structures of all types make use of many features of wood. But wood has enemies in the form of weather, decay, insects, and fire. Through impregnation, pressure-treated wood has been protected from these enemies.

CarterHoltHarvey source Roundwood from premium quality Radiata Pine forests. The logs are then treated under strict quality control procedures to produce a superior end product. This in turn produces timber for outdoor and underground use which has high protection against the ravages of our harsh environment, termites, fungi, rot and in the case of Creosote treated posts, to a certain extent, fire.

Pinex® Roundwood treated posts are lighter and stronger than other types. They never lose their diameter making them stronger than split posts containing the same amount of timber.

Treated Pinex® Roundwood posts will take heavier loads at a lower cost per kilometre than any commercially available alternative. This is because the greater strength of the posts allows wider spacing even though, on a piece for piece comparison, their cost may be higher.

Treated pine posts have the strength and good ground holding characteristics required to perform well even under extreme conditions of flooding or wet soil conditions.

Preservative pine posts combine strength and durability with lightness and ease of installation. For your next project specify Pinex® Roundwood CCA or Creosote treated posts.

## Why you should choose Pinex® Roundwood posts and rails?

- Stronger for longer
- Ideal for fencing and trellising
- Durable - Preservative treated
- Light and strong
- Economical
- Plantation Radiata Pine



## CCA Treatment

Copper-Chromium-Arsenic or CCA protects against weathering, termites, fungi and rot. Pinex® Roundwood CCA treated posts have a characteristic green colour. The treatment has little effect on the physical properties of the timber which remains clean, paintable and mostly suitable for rural construction purposes.

CCA preservatives are 'fixed' into the Radiata Pine by a complex series of reactions. A white powder which sometimes appears on the surface of treated wood up to six weeks after treatment is a harmless by-product of the fixation process. These deposits are water soluble and easily hosed off.

Pinex® Roundwood CCA posts have been correctly treated so they will last for decades in many typical applications including vineyard trellising, livestock chutes, stock enclosures, barns, feeders, storage sheds, and many other rural applications.

Pinex® Roundwood CCA treated posts present no danger to humans, animals or plants. For more information refer to our Material Safety Data Sheet.

## Creosote Treatment

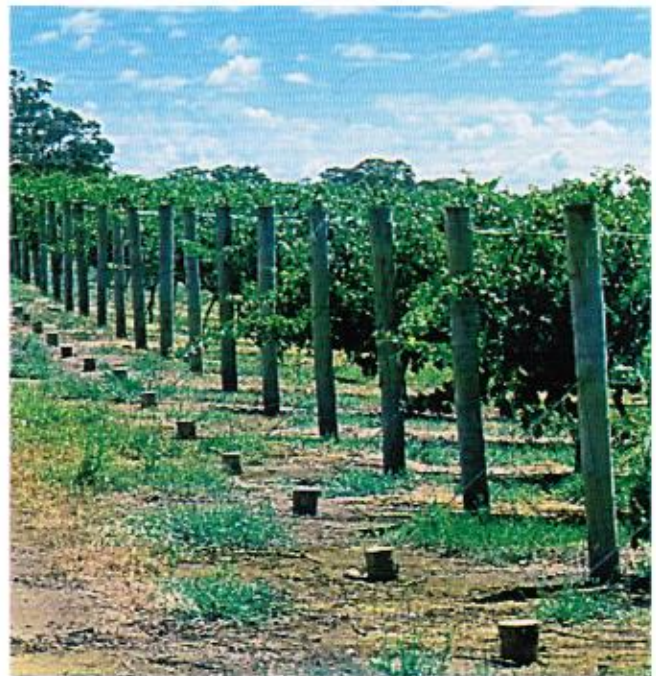
Creosote preservatives is the oldest and one of the most effective methods of impregnating wood for protection against weather, termites, fungi, rot and, to a certain extent, fire.

Creosote treated Pinex® Roundwood posts offer heavy duty resistance to our harsh environment. It can be used in many rural situations and provides outstanding durability for timber poles, posts, stainers, rails and other applications used in or near the ground.

Over time Pinex® Roundwood Creosote treated round posts become fire-hardened. They offer virtually complete resistance to fire damage because they are more difficult to ignite than untreated wood. On ignition they tend to self extinguish after a short burning period, especially in the event of grass fires.

If Creosote treated Pinex® Roundwood posts are handled when freshly treated in sunlight, the vapour given off can cause sunburn. So, when fencing or trellising be sure to wear sunscreen, protective eyewear and gloves. The vapour however is non-toxic to humans, animals or plants.

For more information refer to our Material Safety Data Sheet.



## Get the best out of your vineyard by using Pinex® Roundwood.

With the advent of mechanical harvesting of grapes, the increase of acreage being planted to vines in Australia has been significant.

Pinex® Roundwood treated posts for trellising is the most economical and sensible way to support your next 'Gold Medal' crop.

## Longer lasting fencing and other rural constructions.

Stockyards have to put up with some extremely heavy buffeting.

Pinex® Roundwood posts are ideal in these situations, they're strong and very simply constructed. You'll find treated Radiata Pine to be practically maintenance-free and long lasting. Pole construction is inexpensive and versatile.

Our Radiata Pine posts are ideal for machine or hay sheds, rural workshops and garages.

Specifying Pinex® Roundwood treated posts means you will enjoy many benefits. It is quick and easy to erect; no need for expensive foundations; low maintenance; and the timber is pre-cut to length.



## Treated Pine Hazard Level Guide

**H4**

**Outside, in-ground**

High fungal decay and termite hazard. Fencing, greenhouses, pergolas, non-structural and landscaping timbers.

## Working with Pinex® Roundwood: Safety Data

- Please dispose of unwanted waste at an authorised waste management site
- Do not breathe wood dust
- Avoid contact with eyes
- Please do not burn CCA material
- Please wear sunscreen when handling freshly treated Creosote treated Pinex® Roundwood
- Please wear gloves when handling freshly treated Creosote treated Pinex® Roundwood
- For more information refer to the relevant Material Safety Data Sheet for either CCA or Creosote treated Pinex® Roundwood



**Typical Cambio Post** | **Typical Shaven Post**  
Rough Surface, High Strength | Smooth Surface, Good Appearance

Product (dia.)	Creosote (Creopost)							CCA							
	Cambio (metres)			Shaven (metres)				Cambio (metres)			Shaven (metres)				
50-75mm	1.8	2.1	2.4	-	-	-	-	2.1	2.4	-	-	-	-	-	
75-100mm	1.8	2.1	2.4	1.8	3.0	-	-	1.8	2.1	2.4	1.8	2.1	2.4	3.0	
100-125mm	1.8	2.1	2.4	1.8	2.1	3.0	3.6	1.8	2.1	2.4	1.8	2.1	2.4	3.0	3.6
125-150mm	2.1	2.4	2.7	-	-	-	-	2.1	2.4	2.7	-	2.1	2.4	-	-
150-200mm	2.1	2.4	2.7	-	-	-	-	2.1	2.4	2.7	-	2.1	2.4	-	-
200-250mm	2.1	2.4	-	-	-	-	-	-	-	-	-	-	-	-	-
125-150mm (faced post)	2.1	2.4	-	-	-	-	-	-	-	-	-	-	-	-	-

Product (dia.)	Creosote (Creosawn)		
	Sawn (metres)		
125x40	All lengths (3-6m)		
150x40	4.8	5.4	6.0
150x50	4.8	5.4	6.0
200x40	4.8	5.4	6.0
200x50	4.8	5.4	6.0
100x100	1.8	-	-

The CarterHoltHarvey range of products & services are distributed by:

For more details call:  
08 8721 2724  
[www.chhwoodproducts.com.au](http://www.chhwoodproducts.com.au)